

# GPSG-1000

## GPS/Galileo Portable Positional Simulator

**COBHAM**

An economical simulator with high-end test capability ideal for validating the performance of GPS enabled devices

The most important thing we build is trust



# GPSG-1000

Versatile time-saving portable test set for GPS/GALILEO receivers including WAAS/EGNOS SBAS simulation



## Features

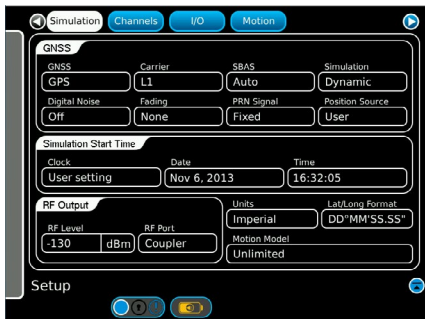
- GPS signals: L1, L1C\*, L2C\*, L5\*
- Galileo signals: E1, E5\*\*, E5a\*\*, E5b\*\*
- Simultaneous GPS/Galileo simulation
- Static and dynamic simulations
- NMEA-0183 File Record and Playback functionality
- 12 channel configuration (RAIM supported)
- Programmable space vehicle (SV) parameters and health
- User or built-in GPS receiver referenced time and date
- PVT data available via RS-232
- Remote control interface Ethernet
- Software/firmware upgradable

\* Some receivers require synchronized L1 transmissions  
 \*\* Some receivers require synchronized E1 transmissions

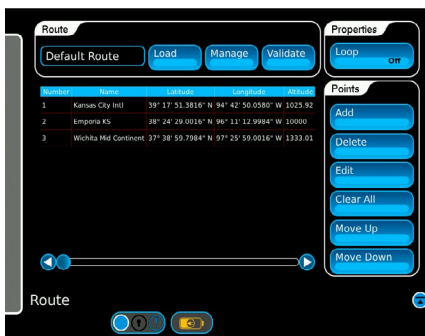
See Product Specification Sheet for a more detailed specification.

The GPSG-1000 is a software upgradable, single carrier, multi-channel simulator.

The GPSG-1000 provides 3D positional simulation and allows any combination of visible SV's to be selected. One or two channels may be allocated to SBAS simulation.



The Setup page is partitioned via a tab selection scheme to allow control for Simulation, Almanac, Channels and I/O.



Routes with up to 10,000 route points, may be saved and recalled under a user entered route name, using the route file management system.

## Applications

- General testing of civil GPS and Galileo receivers
- Testing of non-encrypted military GPS receivers
- Positive Train Control
- Asset tracking and telematics
- TAWS / WAAS / GBAS

## Standard Accessory Kit



## Physical Characteristics

Size (test set only): 10.6"H x 13.9"W x 3.4"D  
 (27.0 cm x 35.5 cm x 8.7 cm)  
 Weight: 15.5 lbs. (test set only)  
 48 lbs. (kit with shipping case)

## Environmental

Operational Temp: -20° to 55° C  
 Storage Temp: -30° to 71° C  
 Altitude: ≤10,000 feet

## Test Set Certifications

MIL-PRF-28800F Class 2  
 MIL-STD-810F  
 UL  
 CE

For complete certification list, see Product Specification sheet

## Versions, Options and Accessories

Order Number	Description
87339	GPSG-1000 12 Satellite Simulator

## Standard Accessories

88493	Transit case (qty 1)
67374	Power supply
87636	Antenna coupler
90113	RX Antenna
90114	Cable, coax 50 ft.
62302	Power cord (U.S)
64020	Power cord (European)
88753	Coupler shot bag
88037	Operation Manual (CD)
88038	Getting Started Manual (paper)

## Optional Accessories

87040	External battery charger
86196	Spare battery pack
90106	Kit, Antenna coupler placement pole 8 ft.
91136	Kit, CPLR Dual GPS Antenna System
91137	Kit, CPLR Triple GPS Antenna System
113108	Kit, GPS Receiver Termination, 190 Ohms
89023	Maintenance Manual (CD)

For further information please contact:

**Cobham AvComm**  
 10200 West York Street  
 Wichita, KS 67215 USA  
 T: (316) 522-4981  
 F: (316) 522-1360  
 AvComm.TechSales@aeroflex.com

or contact your local Cobham AvComm sales office